

New arrival



Item No.: 2206-T Material: PS+TPR
Size: 18.3*6.5cm Weight:65.7g

Product Information

New arrival



Item No.: 2206
Material: PS+TPR

Size: 18.3*6.5cm
Weight:65.7g

Product Information

New arrival



Item No.: 2106
Material: PS+rubber+nylon

Size: 17.7*6.4cm
Weight:53g

Product Information

New arrival



Item No.: 2201
Material: PS+TPR

Size: 21*8cm
Weight:88g



New arrival

item No.: 2202



Size : 18.3*7.8cm

Material : PS+rubber



New arrival

item No.: 2203



Size : 18.5*7.6cm

Material : PS+rubber



item No.: 2204



Size : 17.5*9cm

Material : PS+rubber

New arrival



item No.: 2205



Size : 19.1*7.7cm

Material : PS+rubber

New arrival



Product Information



Item No.: 1824
Material: PS+TPR

Size: 15.1*9cm
Weight:47g

New arrival



Product Information

New arrival



Item No.: 1825
Material: PS+TPR

Size: 15.3*8cm
Weight:43g

Product Information

New arrival



Item No.: 1826
Material: PS+TPR

Size: 15.6*6.8cm
Weight:40g

Product Information

New arrival



Item No.: 1827
Material: PS+TPR

Size: 15.4*7.6cm
Weight:43g

Product Information



Item No.: 1831
Material: PS+TPR

Size: 17.3*5.3cm
Weight:45g

New arrival



Product Information



Item No.: 1832
Material: PS+TPEE

Size: 17.1*6cm
Weight:48g

New arrival



Product Information



Item No.: 1833
Material: PS+TPR

Size: 15*6.8cm
Weight:38g

New arrival



Product Information



Item No.: 1834
Material: PS+TPR

Size: 15.8*5.8cm
Weight:38g

New arrival



Product Information



Item No.: 1835
Material: PS+TPR

Size: 13.7*7.2cm
Weight:37g

New arrival



Product Information

New arrival



Item No.: 1836
Material: PS+TPR

Size: 14.5*7.6m
Weight:45g

Product Information



Item No.: 1837
Material: PS+TPR

Size: 16.1*5.8cm
Weight:45g

New arrival



Product Information



Item No.: 1838
Material: PS+TPR

Size: 14.1*5.7cm
Weight:33g

New arrival



Product Information



New arrival



Item No.: 2101

Material:

ABS+RUBBER+NYLON+W

ATERr/ Foam ball

Size: 23*7.2cm

Weight:120g

Product Information

New arrival



Item No.: 2102
Material:
ABS+Rubber+Nylon+
Water/ Foam ball

Size: 23.2*6.7cm
Weight:116g

Product Information

New arrival



Item No.: 2103

Size: 21.5*10.2cm

Material:

Weight: 126g

ABS+Rubber+Nylon+
Water/ Foam ball

Product Information

New arrival



Item No.: 2104

Material:

ABS+Rubber+Nylon+
Water/ Foam ball

Size: 22.2*6.3cm

Weight: 112g

Product Information



Item No.: 2105
Material:
ABS+Rubber+Nylon+
Water/ Foam ball

Size: 23.8*6.8cm
Weight:112g

New arrival



Product Information



Item No.: YB1401
Material: PP+TPR

Size: 13*5cm
Weight: 20g



Product Information



Item No.: YB1406

Size: 17*6cm

Material: ABS+TPEE

Weight:47g

Product Information



Item No.: YB1407 Size: 17*4cm
Material: ABS+TPEE Weight:40g



Product Information



Item No.: YB1408
Material: ABS+TPEE

Size: 14*3.8cm
Weight:27g



Product Information



Item No.: YB1409

Size: 17*5.5cm

Material: ABS+TPEE

Weight:40g

Product Information



Item No.: 1801

Material:

PP+RUBBER+NYLON

Size: 15*7.9cm

Weight:54g

Product Information



Item No.: 1802
Material:
ABS+Rubber+Nylon

Size: 25*8cm
Weight:84g



Product Information



Item No.: 1803

Material:

ABS/PP+RUBBER+NYLON

Size: 18*6cm

Weight:42g



Product Information



Item No.: 1804
Material:
ABS+RUBBER+NYLON

Size: 23*7.5cm
Weight:78g



Product Information



Item No.: 1805

Material:

ABS+RUBBER+NYLON

Size: 21.8*8.8cm

Weight:94g

Product Information



Item No.: 1806

Material:

PP+RUBBER+NYLON

Size: 21.8*10.3cm

Weight:82g

Product Information



Item No.: 1807
Material:
PP+RUBBER+NYLON

Size: 23.5*7.2cm
Weight:76g

Product Information



Item No.: 1808

Material:

PS+RUBBER+NYLON

Size: 18*8.5cm

Weight:61g

Product Information



Item No.: 1809
Material:
PP+RUBBER+NYLON

Size: 17*7.8cm
Weight:44g



Product Information



Item No.: 1810

Size: 14*5.3cm

Material:

Weight:33g

ABS+RUBBER+NYLON

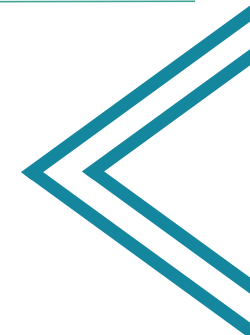


Product Information



Item No.: 1811
Material: PS+TPEE

Size: 13*6.5cm
Weight:30.2g



Product Information



Item No.: 1812
Material: PS+TPEE

Size: 13*6.5cm
Weight:33.4g



Product Information



Item No.: 1813
Material: PS+TPEE

Size: 14.3*5.4cm
Weight:30.4g

Product Information



Item No.: 1814
Material: PS+TPEE

Size: 15.1*6.6cm
Weight:37.1g

Product Information



Item No.: 1815
Material: PS+TPEE

Size: 13.5*5.4 cm
Weight:33.7g

Product Information



Item No.: 1816
Material: PS+TPEE

Size: 14*7.4cm
Weight:35.4g

Product Information



Item No.: 1817
Material: PS+TPEE

Size: 14.1*6.8 cm
Weight:38.4g



Product Information



Item No.: 1818
Material: PS+TPEE

Size: 13.6*7.4 cm
Weight:32.5g



Product Information



Item No.: 1819

Size: 13.9*7.5cm

Material: PS+TPEE

Weight:41g

Product Information



Item No.: 1820
Material: PS+TPEE

Size:13.5*8 cm
Weight:43.1g

Product Information



Item No.: 1821

Size: 21*7cm

Material:

Weight:70g

PS+RUBBER+NYLON

Product Information



Item No.: 1822

Size: 21*6.5cm

Material:

Weight:70g

PS+RUBBER+NYLON

Product Information



Item No.: 1823
Material: PS+TPR

Size: 17*8.5cm
Weight:70g

Product Information



Item No.: 1828
Material: PS+TPR

Size: 17.5*8.5cm
Weight:69g

Product Information



Item No.: 1829
Material: PS+TPR

Size: 19.5*9cm
Weight:80g

Product Information



Item No.: 1830
Material:
PS+RUBBER+NYLON

Size: 20*8cm
Weight:78g

Product Information



Item No.: 8586

Size: 23.5*7.5cm

Material:

Weight:83g

PP+RUBBER+NYLON

Product Information



Item No.: 8587

Size: 22.3*7cm

Material:

Weight:78g

ABS+RUBBER+NYLON

Product Information



Item No.: 8588

Material:

ABS+RUBBER+NYLON

Size: 21.7*7cm

Weight:70g

Product Information



Item No.: M5P

Size: 6.5*6.5cm

Material:

Weight:33g

ABS+RUBBER+NYLON

Product Information



Item No.: LJF-0001
Material: ABS+NYLON

Size: 11*4.2cm
Weight:60g



Product Information



Item No.: KTZ001
Material: ABS

Size: 22*4.5cm
Weight:32.9g



Product Information



Item No.: 9543-MC
Material: ABS

Size: 24*6cm
Weight:76g



Product Information



Item No.:205L
Material: TPR

Size: 7.5*8.4cm
Weight:60g



Product Information



Item No.: 563S
Material: PP+grass

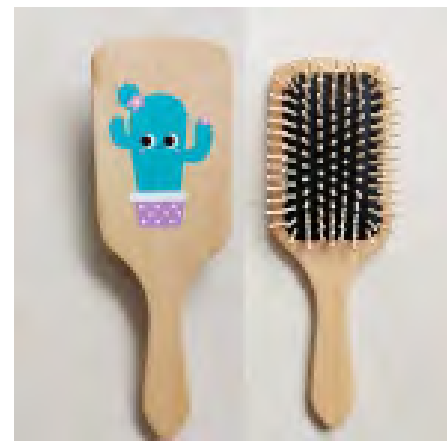
Size: 27.5*17.5cm
Weight:248g



Product Information



Item No.: LJ1903-PF
Material: Wood+TPR
Size: 25*8.3cm
Weight:98g





↶ item No.: XM1922
material: bamboo
size: 22*6.5cm



item No.: XM1923
material: bamboo
size: 25.4*8.3cm





item No.: XM1918
material: wood
size: 14*7.3cm



item No.: XM1921
material: wood
size: 24.5*8.5cm



item No.: XM1919
material: wood
size: 23.6*9cm



item No.: XM1920
material: wood
size: 22*6.5cm



item No.: XM1917
material: wood
size: 25.2*8.7cm



item No.: XM1915
material: wood
size: 25*9.5cm

Product Information



Item No.: 9886-54ZS size:25*8cm



Item No.: 9585-PB size: 24*7cm



Item No.: 9585-47BO size: 24*7cm



Item No.: 9551-54ZS size: 25*7cm



Item No.: 9551-PB size: 25*7cm



Item No.: 9551-47BO size: 25*7cm

Product Information



Item No.: 9364-B



Item No.: 205P size: 9.2*6cm



Item No.: M5P-TP size: 6.5*6.5cm



Item No.: 9364-R



Item No.: 205R size: 7.8*6.5cm



Item No.: 1911 size: 14*6cm

Product Information



Item No.: LG2021-7 size: 10.5*5.8cm



Item No.: 9551-MB size: 25*7cm



Item No.: 9512-MB size: 23*5.5cm



Item No.: 9511-MB size: 22*4cm



Item No.: Q-9905-E size: 21.3*6.8cm



Item No.: PG-001 size: 23.2*5.4cm

Product Information



Item No.: 304A size: 21.2*5.2cm



Item No.: 303 size: 21*5cm



Item No.: 202B size: 20.3*5.5cm



Item No.: 301 size: 21*5cm



Item No.: 302 size: 21*5cm



Item No.: 201A size: 17*5.5cm

Package method



Poly bag



Hangtag



Poly bag+paper

Package method

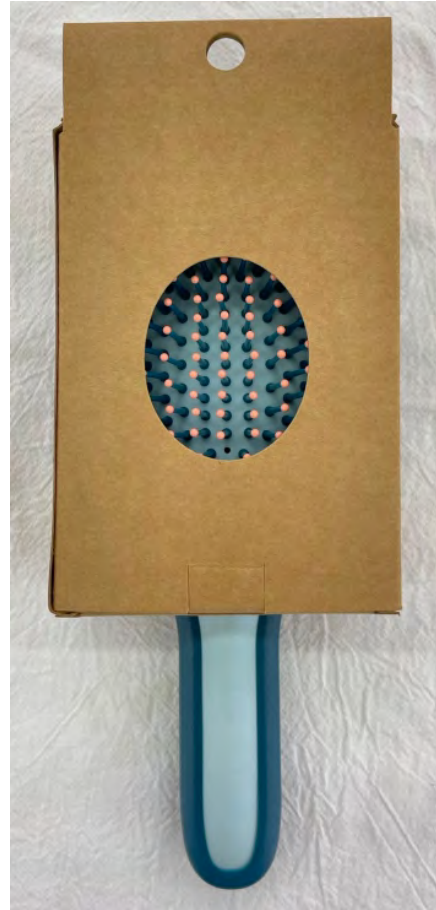


Blister box

Package method



Paper box



Color box



PVC box

Package method



Display box



Gift box



Waiting for your new designs



Sample Room



Audit & test report

Producer : **YIWU DIHAO ELECTRONIC CO.,LTD.**
Yiwu, Zhejiang Province, P.R.China
 Audit Type: Full Audit



Auditee	YIWU DIHAO ELECTRONIC CO.,LTD.
Audit Date From	22/01/2018
Audit Date To	22/01/2018
Expiry Date of the Audit	Please refer to the producer profile in the amfori BSCI platform
Auditing Company	TUEV SUD
Auditor's Name(s)	Qiang Fu(Lead)
Auditing Branch (if applicable)	TUV SUD China



This is an extract of the on line Audit Report. The complete report is available in the amfori BSCI Platform. Access www.bsciplatform.org for entitled users only.

All rights reserved. All part of this publication may be reproduced, stored in a retrieval system, or transmitted, in any form or by any means electronic, mechanical, photocopying, recording or otherwise, but with the exception of those permitted in writing by the publisher.

This is an extract of the audit BSCI Audit Report which is available in the amfori BSCI Platform. All rights reserved. The information is for general reading only.



QUALITY MANAGEMENT SYSTEM CERTIFICATE

Certificate No. **331201745**

This is to certify that
Yiwu Dihao Electronic Co.,Ltd
 Uniform Social Credit Code: **913307827652005060**
 Registered Address: No.28 Dashi road, Yinan industrial area, Fotang town, Yiwu city, Zhejiang province, P.R.China

Operating Address: No.28 Dashi road, Yinan industrial area, Fotang town, Yiwu city, Zhejiang province, P.R.China

has been found to conform to the Management System standard
GB/T19001-2016 idt ISO9001:2015

for the following scope:
The manufacture of handcraft plastic comb

Original Registration Date: **2020.09.30** Latest Revision Date: **2020.09.30** Expiry Date: **2023.09.29**

This certificate remains the property of Cii and is bound by the conditions of contract. The certified organization shall be subject to surveillance audit periodically with acceptable results for maintaining the validity of this certificate. This certificate can be validated from Cii website www.cii.org.cn, as well as the official website of CNCA www.cnca.gov.cn.






Signed by

Cii Testing&Certification (Shanghai) Co.,Ltd.
 CNCA No.: CNCA-R-2017-331
 Room 508 Building 14 No.470 Guiping Road Shanghai, China
info@cii.com.cn





ENVIRONMENTAL MANAGEMENT SYSTEM CERTIFICATE

Certificate No.: 20221E10430R0M

We hereby certify that the organization:
YIWU DIHAO ELECTRONIC CO., LTD
 Unified social credit code: 913307827652005060

is in conformity with Environmental Management System Standard:
GB/T24001-2004 idt ISO14001:2004

The certificate is valid to the following products/service:
Production and related management activities of process plastic comb

Registration Address/Audit Address: 28th Dashi Rd, Yinan Industrial area, Yiwu city, Zhejiang, China

Date of Issue: **22-09-2021**
 Date of Expiry: **21-09-2024**
 Date of Issue: **22-09-2021**

Issued By






The scope of validity of the certificate, the certificate shall be at least once a year. The effectiveness of the Certificate is subject to QM. Contact the issuer for more. Meanwhile, you can search the website of certification body www.gpc.org.cn or search the CNCA website www.cnca.gov.cn.

ZHEJIANG QUANPIN CERTIFICATION CO.,LTD.
 Room 609, Floor 6, Building 1, No. 14 Puzos Road, Puzos Street, Hujiang District, Hangzhou City, Zhejiang Province, China 311131. TEL: 18957000000



Report No.: B-R19042306E

Page 1 of 7

Applicant : Yiwu Dihao Electronic Co., Ltd
 Address : 28th Dashi Rd, Fotang Town, Yiwu City, Zhejiang Province
 Client No. : 05798390
 Manufacturer : Yiwu Dihao Electronic Co., Ltd
 Address : 28th Dashi Rd, Fotang Town, Yiwu City, Zhejiang Province

Report on the submitted sample said to be

Sample Name	plastic hair brush
Model No.	1803santa, 1803snowman, 1803socks, 8587 white marble, 8587 red marble, 8586rabbit, 8586panda
Sample Model	1803santa
Sample Received Date	Apr. 29, 2019
Complete Date	May 08, 2019
Test Items	PAHs
Test Method	With reference to AFS GS 2014-01 PAK, analysis was performed by GC-MS.
Test Result(s)	Please refer to the following page(s).

Company No. 0213634

*****FOR FURTHER DETAILS, PLEASE REFER TO THE FOLLOWING PAGE(S)*****

Reported by *Anno Deng* / Engineer
 Checked by *Austin Zhong* / Engineer
 Approved by *Martin Wang* / Manager

This report is considered invalidated without the Special Seal for Inspection of the Beide (Shenzhen) Product Service Limited. This report shall not be altered, increased or deleted. The results shown in this test report refer only to the sample(s) tested. Without written approval of Beide (Shenzhen) Product Service Limited, this test report shall not be copied except in full and published as advertisement.

Beide (Shenzhen) Product Service Limited
 6F, Bldg E, Houhai 3rd Ind Zone, Xixiang, Bao'an Dist, Shenzhen, China
 Tel.: +86-755-27454488, Email: admin@szbeide.com

Major Market

